

# USB Ethernet 10/100 Adapter

## User's Manual

### 1. Introduction

The USB Ethernet 10/100 adapter performs good plug and play connection of PC peripherals "out-side the box" and mark a significant advance in desktop cable management . Using the USB Ethernet 10/100 adapter you can simplify your PC network connections in the home , office and on the travel.

### 2. Product Features

- Realtek chipset.
- USB specification Ver. 1.0 and 1.1 compliant.
- IEEE 802.3 MII compliant.
- Supports USB Suspend/Resume Function.
- Full-Speed USB Device.
- Supports wakeup frame, link status change and magic packet wake-up .
- Supports win98/2000/ME/XP
- Supports plug and play.

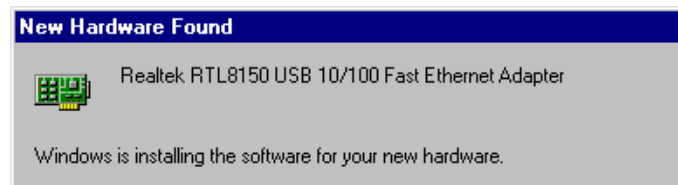
### 3. System Requirements

- IBM PC or compatible PC with 486DX-100 MHz CPU or higher
- Available USB port
- CD-ROM drive
- At least 16MB of DRAM
- Windows 98/2000/ME/XP

### 4. Installing USB Ethernet 10/100 adapter:

Follow the steps below on installing the USB Ethernet 10/100 adapter software:

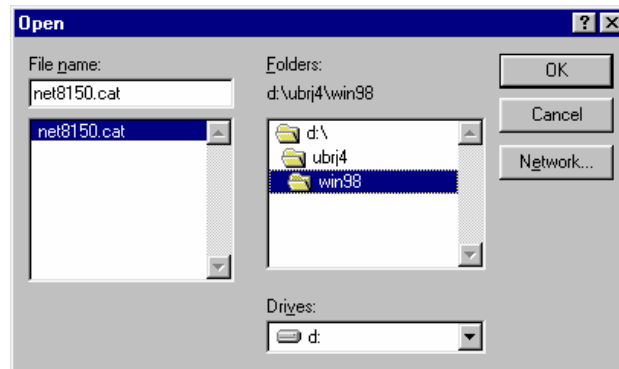
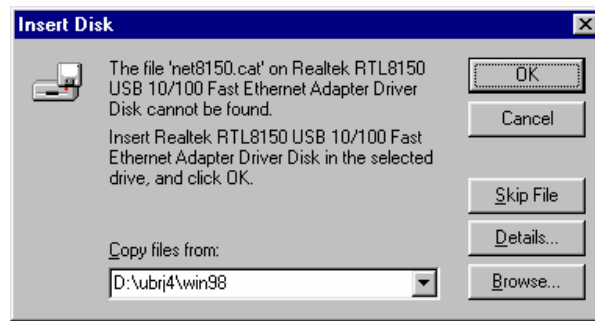
1. Power on your computer and make sure that the USB port is enabled and working properly.
2. Plug in the Realtek RTL8150 USB 10/100 Fast Ethernet adapter into the USB port, there appears a windows about "New Hardware Found" on the desktop.



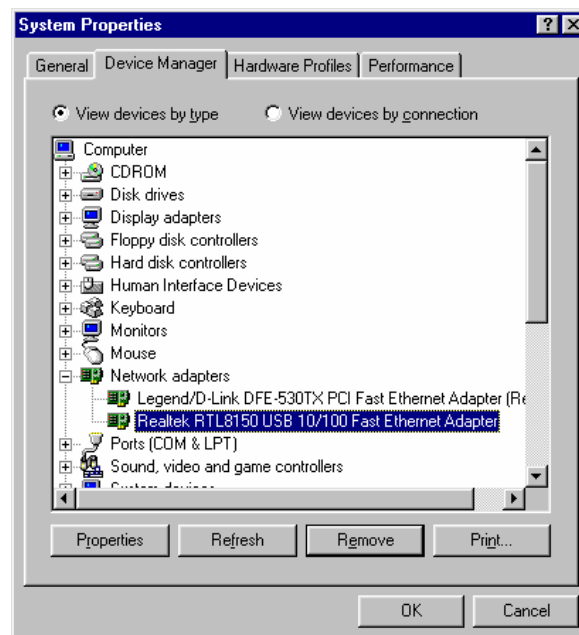
3. following, there appears a windows about "Insert Disk" on the desktop and then click "OK " to continue.



4. Insert the Realtek RTL8150 USB 10/100 Fast Ethernet adapter compact disc into the CD Rom drive and choose "UBRJ4\win98",Click "Next" to continue.

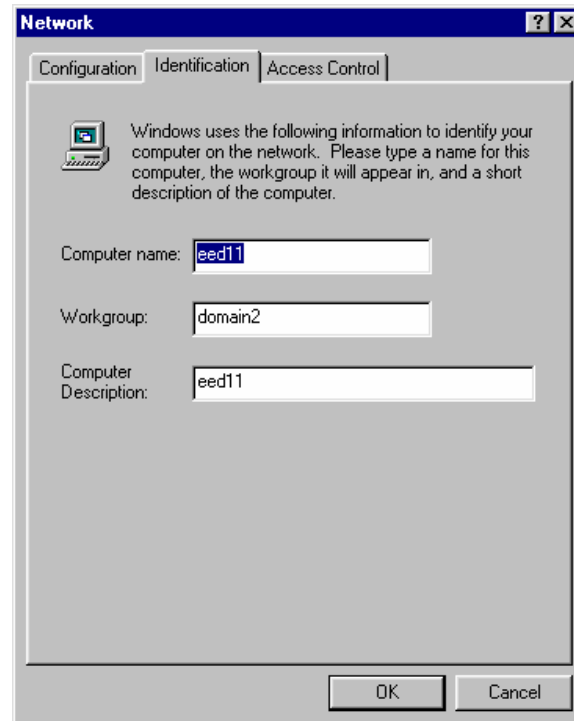


5. And then ,System will automatic install the driver Realtek RTL8150 USB 10/100 Fast Ethernet Adapter driver.
6. After finished the installation will see "Realtek RTL8150 USB 10/100 Fast Ethernet Adapter" under "Network adapters" of "System Properties".

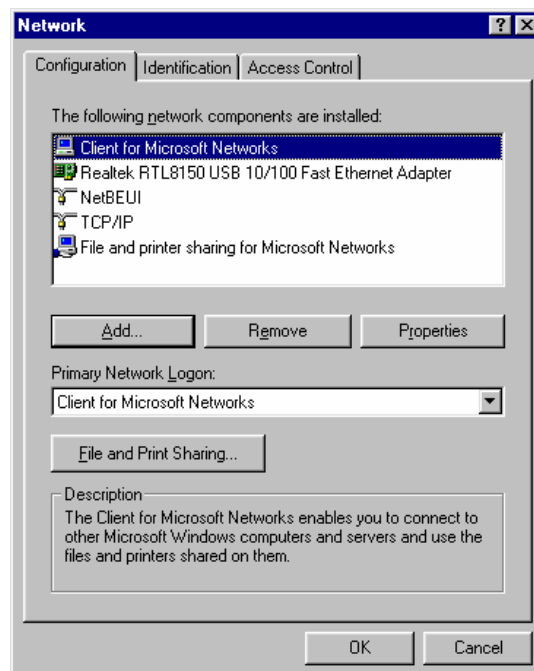


## 5. For Example

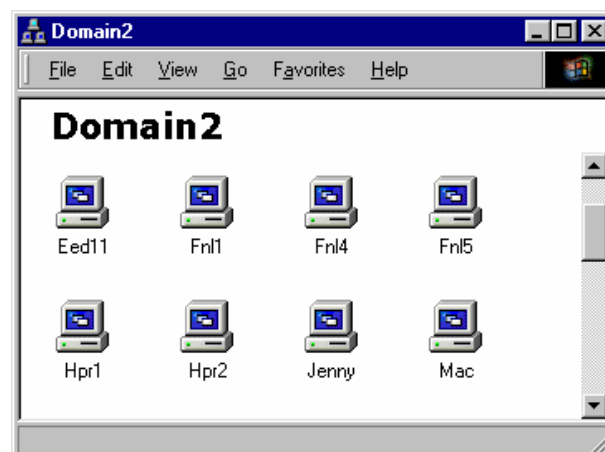
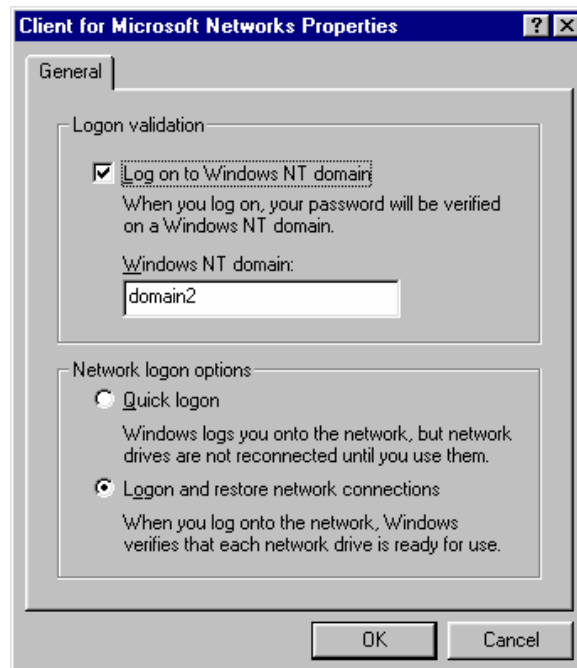
1. If you use inner network,the server is Windows NT,Please set a servers domain name for "Workgroup"(for instance: domain2);And the "Computer name" must differ the other computer,you can needn't set "Computer Description".



2. In "Configuration",you must install the protocol for NetBEUI and TCP/IP.



3. Under "Client for Microsoft Networks Properties", choose "Log on to Windows NT domain", under "Windows NT domain" input domain name of inner network (for instance: Domain2). Here, your computer has entered the inner network you may use the data of inner network.



4. If your inner network can visit Internet, setup the protocol of "TCP/IP", you may look for the information in internet.

At first, set up the IP Address:

You must obey the regulation "IP address".

for instance:

server of "IP address" : 192.168.100.1

inner network of increase by degrees of "IP address" : 192.168.100.2 ~ 192.168.100.255

"Subnet Mask" of and the other computer: 255.255.255.0

"New gateway" of and the other computer: 192.168.100.1

**TCP/IP Properties** [?] [X]

Bindings   Advanced   NetBIOS  
DNS Configuration   Gateway   WINS Configuration   IP Address

An IP address can be automatically assigned to this computer. If your network does not automatically assign IP addresses, ask your network administrator for an address, and then type it in the space below.

☐ Obtain an IP address automatically

☒ Specify an IP address:

IP Address:

Subnet Mask:

OK   Cancel

**TCP/IP Properties** [?] [X]

Bindings   Advanced   NetBIOS  
DNS Configuration   Gateway   WINS Configuration   IP Address

The first gateway in the Installed Gateway list will be the default. The address order in the list will be the order in which these machines are used.

New gateway:

Installed gateways:

OK   Cancel

**TCP/IP Properties** [?] [X]

Bindings	Advanced	NetBIOS
DNS Configuration	Gateway	WINS Configuration
IP Address		

☐ Disable DNS

☒ Enable DNS

Host:  Domain:

DNS Server Search Order

202 . 96 . 131 . 129	Add
202.96.131.129	Remove

Domain Suffix Search Order

	Add
	Remove

OK Cancel